

RISØRVGS

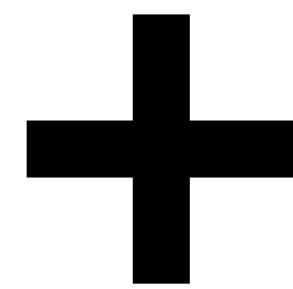


# OUR TEAM

**UIA**



Line  
Iversen  
Ekrann



**AHO**



Jens Christian  
Boxaspen



Ine Marie Bakk



Carlotta  
Ludig



Trygve  
Shadi  
Restan

# OUR TASK..

..was to find solutions on how Risor High School can become an **attractive, small and exciting niche school** in the future.



**RISØRVGS**  
Today



**RISØRVGS**  
Today

**RISØRVGS**  
2040  
Vision



**RISØRVGS**  
Today

**RISØRVGS**  
2040  
Vision

**RISØRVGS**  
Implementation  
2018-2025

# RISØRVGS

Today



**RISØRVGS**

Today



**TVEDESTRAND**

TOMORROW





# FINDINGS

Risør Town

# FINDINGS

Strengths

Scenery



# FINDINGS

Strengths

Resources



# FINDINGS

Strengths

Traditional  
Values



# FINDINGS

Strengths

Thriving Art  
Scene



# FINDINGS

Strengths

Innovative &  
Future  
Oriented



# FINDINGS

Weaknesses

Lack of  
Opportunities  
for Youth



# FINDINGS

Weaknesses

Urbanization  
=  
Loss of  
Youth





# FINDINGS

High School

# FINDINGS

Strengths

Close Knit  
School



# FINDINGS

Strengths

Excellent  
National Test  
Scores

	Risør VGS (15-16)	Risør VGS (14-15)	Risør VGS (13-14)	Aust-Agder (15-16)
	3,76 →	3,70 →	3,71 →	3,64 →
	3,95 →	3,95 →	3,84 →	3,84 →
	3,96 →	3,94 →	3,87 →	3,93 →
	4,42 →	4,39 ↗	4,16 →	4,38 →
	3,66 →	3,74 ↗	3,52	3,61 →
	4,28 →	4,25 →	4,27 →	4,24 →
	4,09 →	4,04 ↗	3,73	4,01 →
	4,87 →	4,87 →	4,88 →	4,85 →
	4,10 →	4,07 →	3,97	4,03 →
	3,89 →	4,00 ↗	3,47 →	3,79 →

# FINDINGS

Strenghts

Big Focus  
on each  
Student



# FINDINGS

Weaknesses

Low  
Technological  
Resources



# FINDINGS

Weaknesses

Lacking  
Overall  
Appeal



# Value Proposition

**Unique school,  
attractive for  
students nationally**

**Connecting the  
school with city  
and its resources**

**Creating synergies  
that add value to  
local businesses**

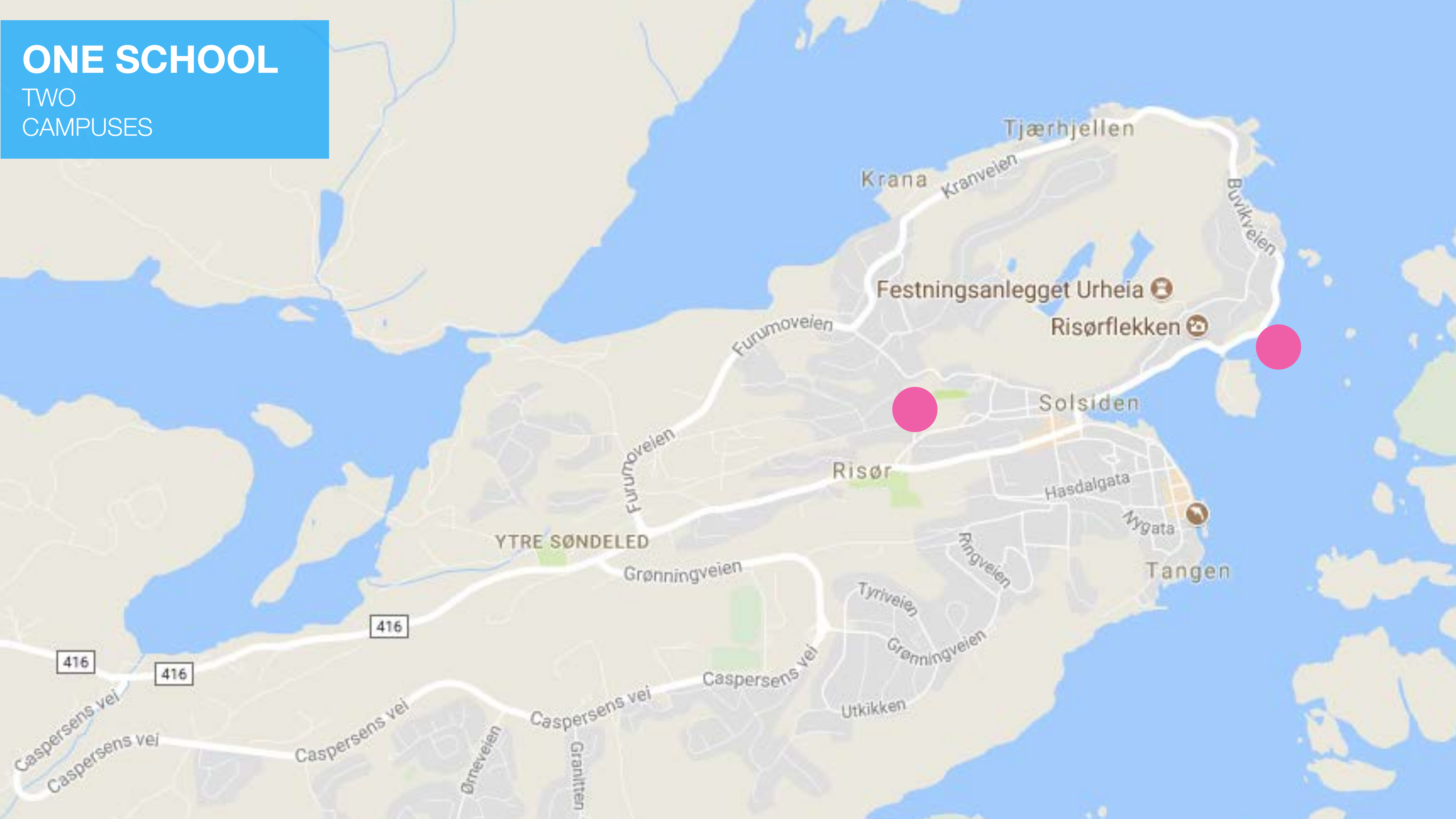


RISØR  
VGS



# ONE SCHOOL

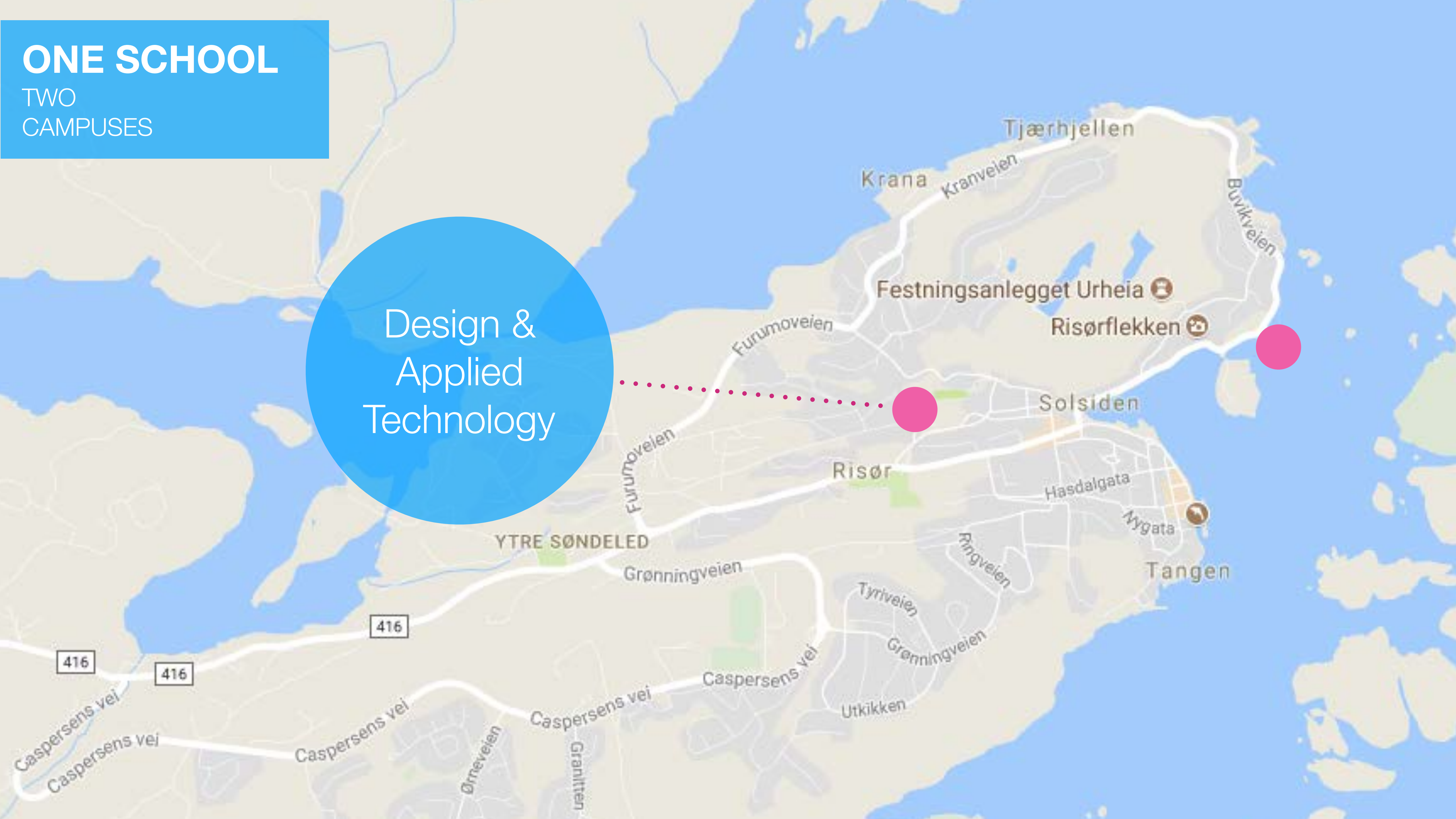
TWO  
CAMPUSES



# ONE SCHOOL

TWO  
CAMPUSES

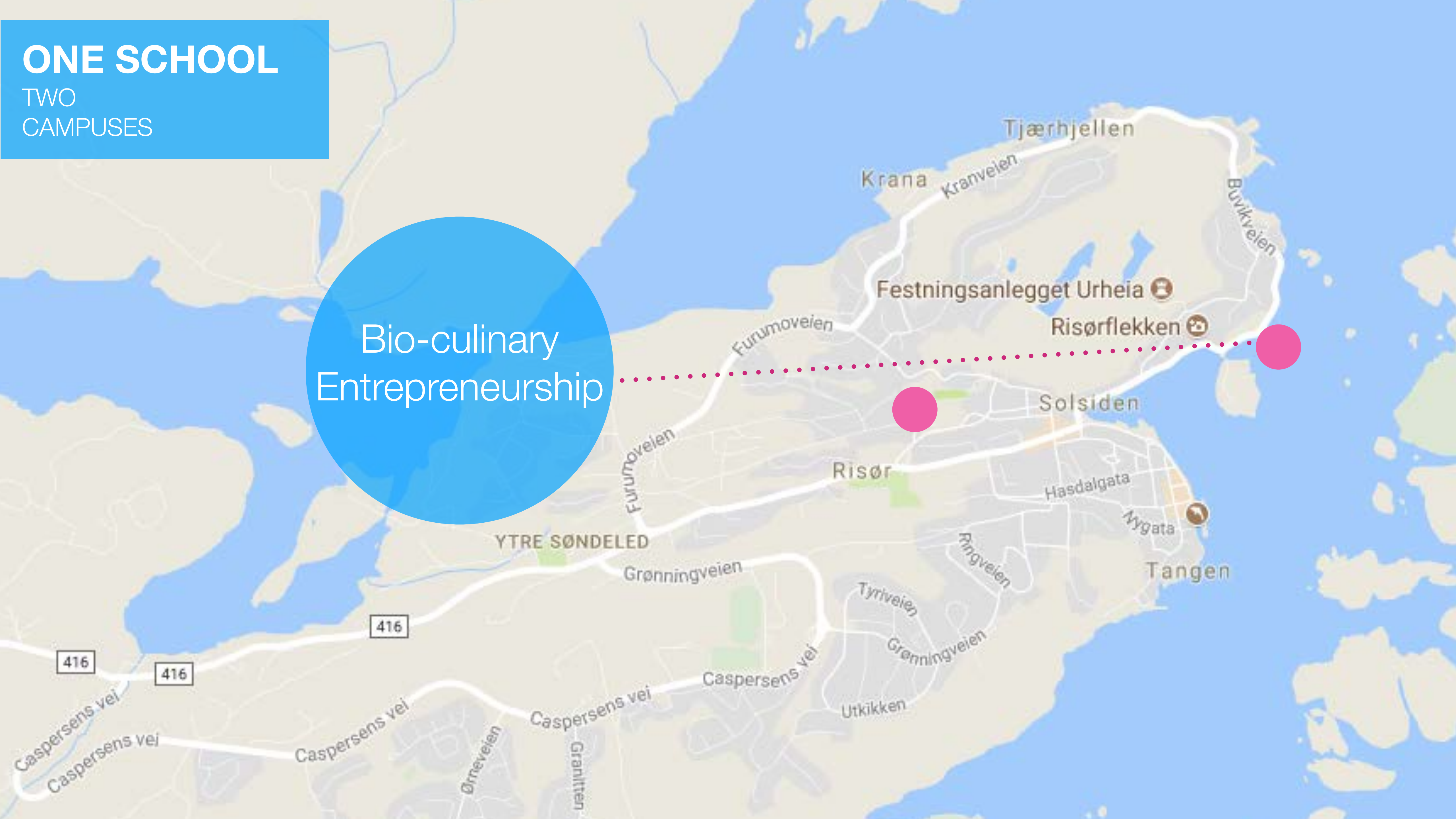
Design &  
Applied  
Technology



# ONE SCHOOL

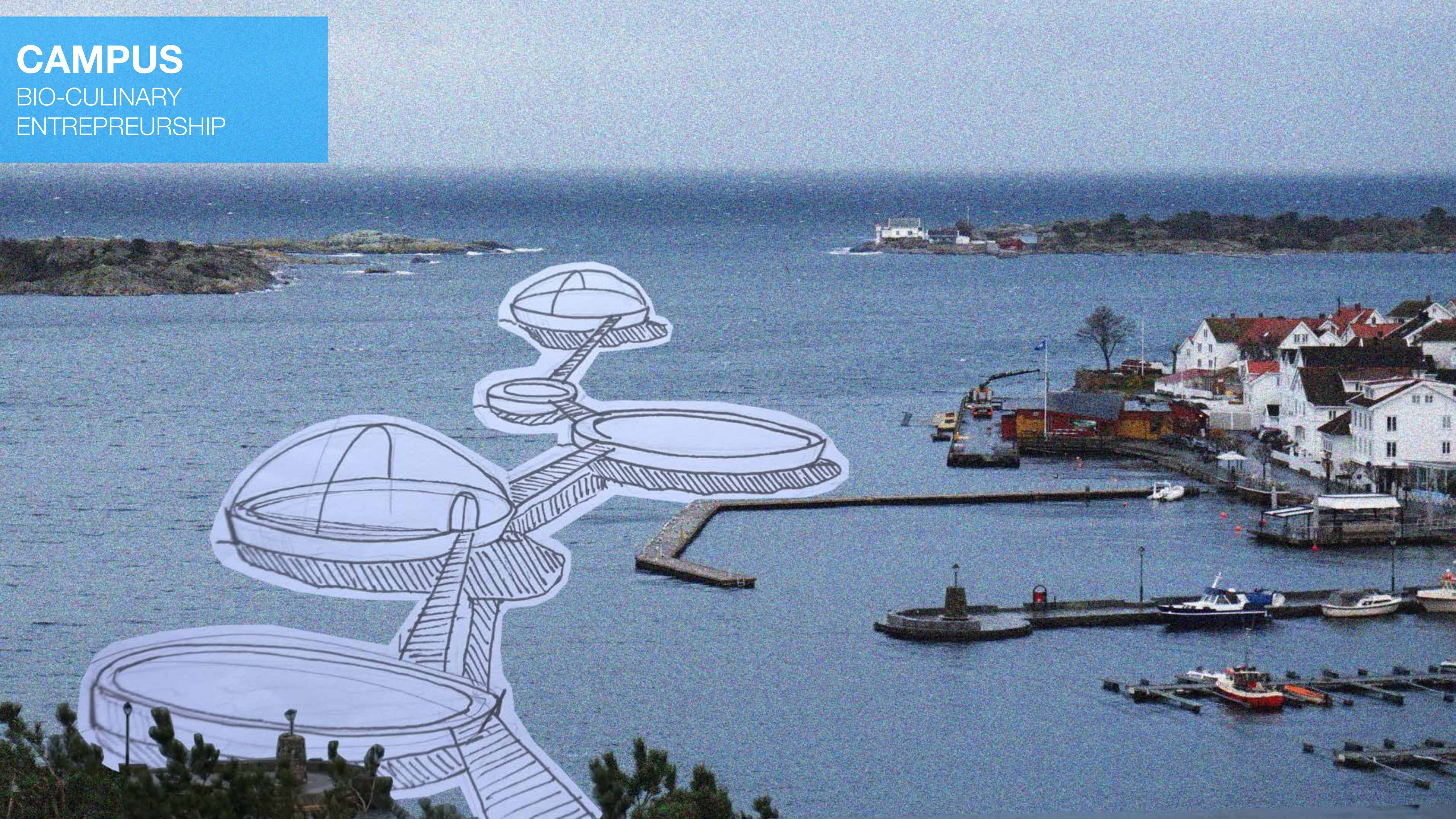
TWO  
CAMPUSES

Bio-culinary  
Entrepreneurship



# CAMPUS

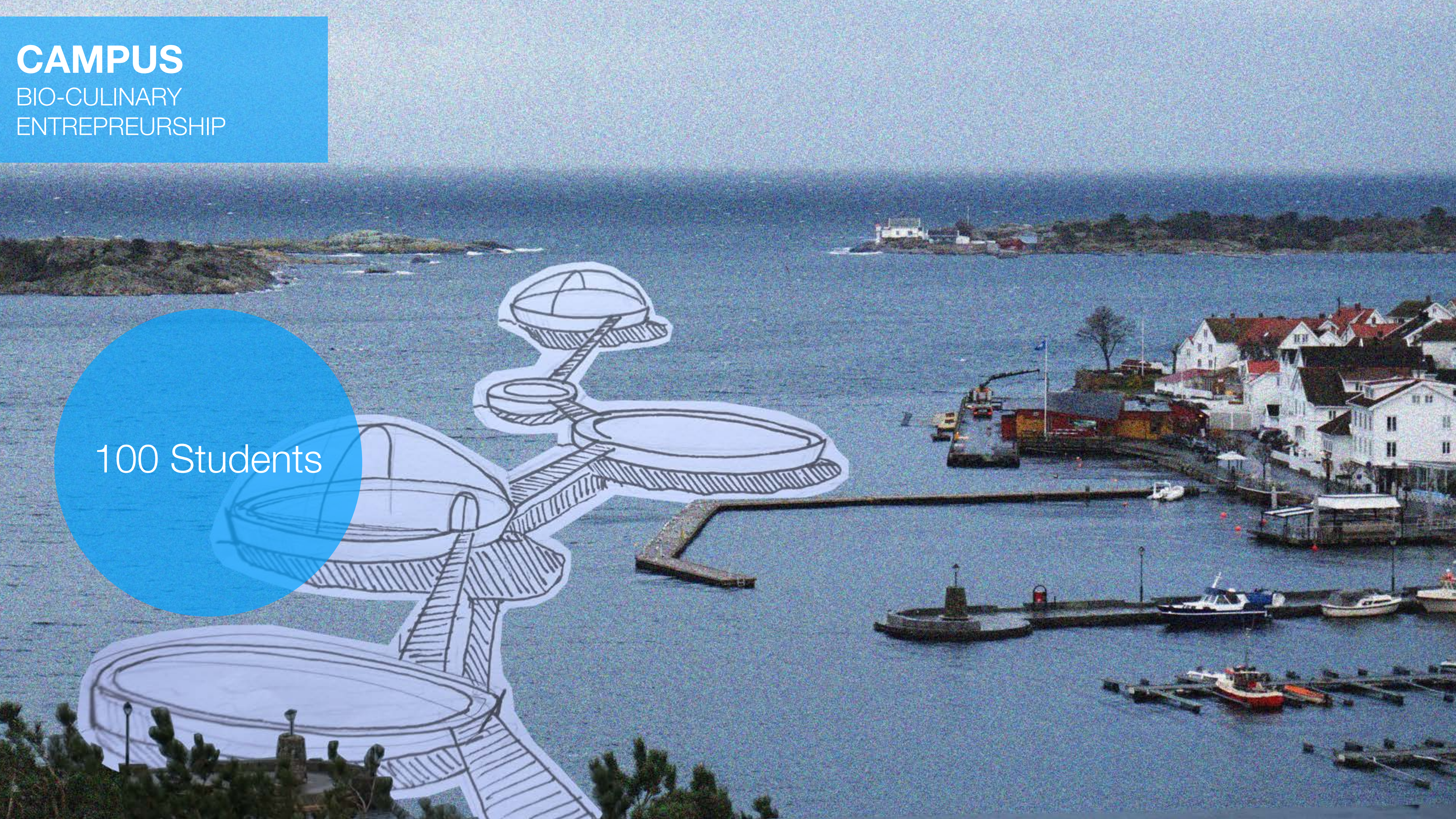
BIO-CULINARY  
ENTREPREURSHIP



# CAMPUS

BIO-CULINARY  
ENTREPREURSHIP

100 Students





**CAMPUS**  
BIO-CULINARY  
ENTREPRENEURSHIP

Modern  
Agriculture

**CAMPUS**  
BIO-CULINARY  
ENTREPREURSHIP

Aqua Culture





**CAMPUS**  
BIO-CULINARY  
ENTREPREURSHIP

Algae Farming



**CAMPUS**  
BIO-CULINARY  
ENTREPREURSHIP

Culinary  
Experimenting





**CAMPUS**  
BIO-CULINARY  
ENTREPREURSHIP

Entrepreneurship

**CAMPUS**  
BIO-CULINARY  
ENTREPREURSHIP

Future  
of  
Norway





**CAMPUS**  
BIO-CULINARY  
ENTREPREURSHIP

40 Billion  
yearly  
2050

**CAMPUS**  
BIO-CULINARY  
ENTREPREURSHIP

Keeping up with  
trends



# HIGH SCHOOL

POP-UP STORES &  
FOOD TRUCKS

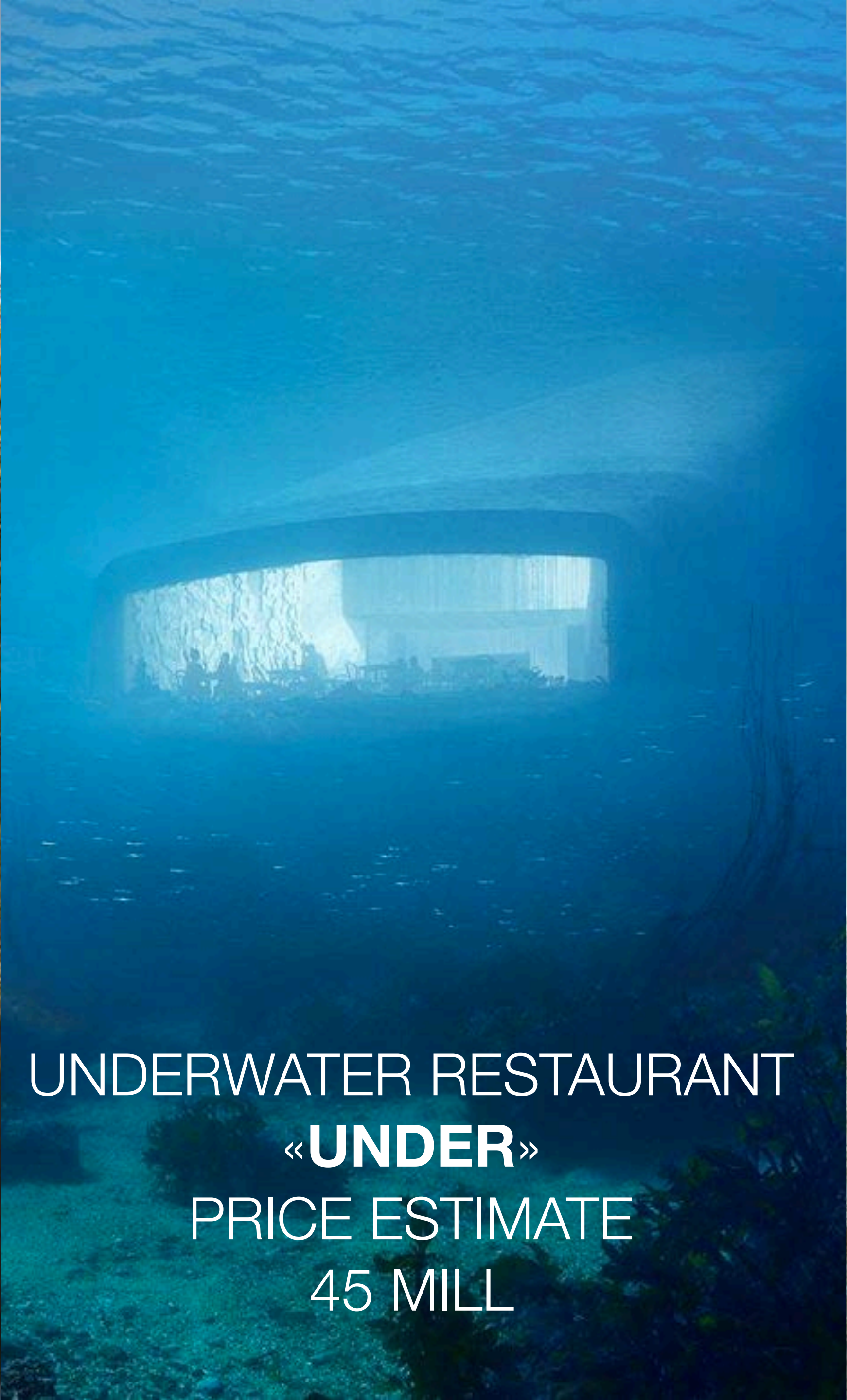


# COSTS

2040



NEW **TVEDESTRAND**  
HIGH SCHOOL  
PRICE ESTIMATE  
620 MILL



UNDERWATER RESTAURANT  
«**UNDER**»  
PRICE ESTIMATE  
45 MILL



AQUACULTURE FARM  
SINGLE UNIT  
1-5 MILL



# THE JOURNEY



# RISØR2040

TIMELINE

2018

2025

VISION

**IMPLEMENTATION**  
INCREMENTAL STEPS

**IMPLEMENTATION**  
RADICAL STEPS



# RISØR2040

TIMELINE

2018

2025

**IMPLEMENTATION**  
INCREMENTAL STEPS

2040



# SYLLABUS

PROGRAMMES

**Restaurant  
& Food  
Processing**



Traditions

Vocational



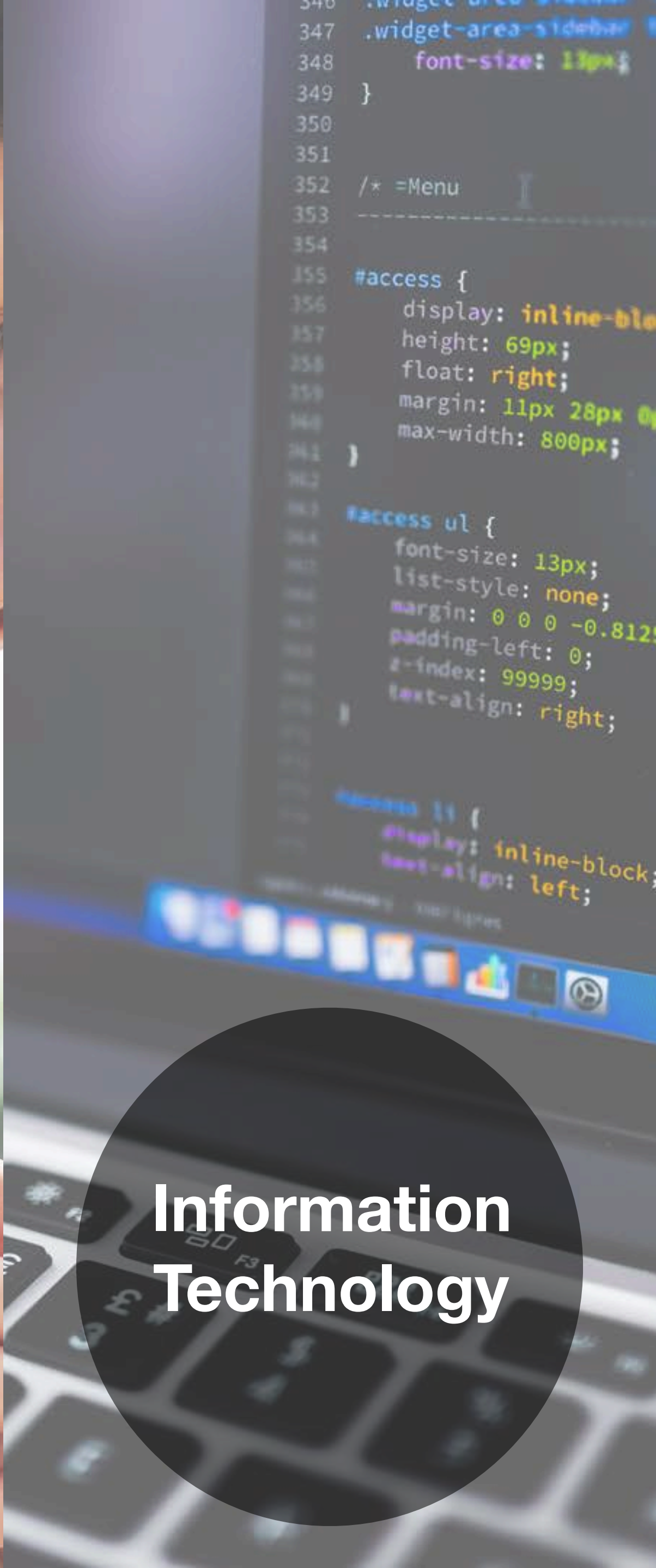
**DESIGN &  
CRAFTS**



# SYLLABUS

## COURSES

**Communication  
& Culture**



**Information  
Technology**



**Tourism &  
Languages**



**Technology &  
Theory  
of Research**

# BUSINESS WORLD

**Guest  
Lecturers**

**Excursions**

**Placements**

**Real World  
Case Solving**

# TECHNOLOGY

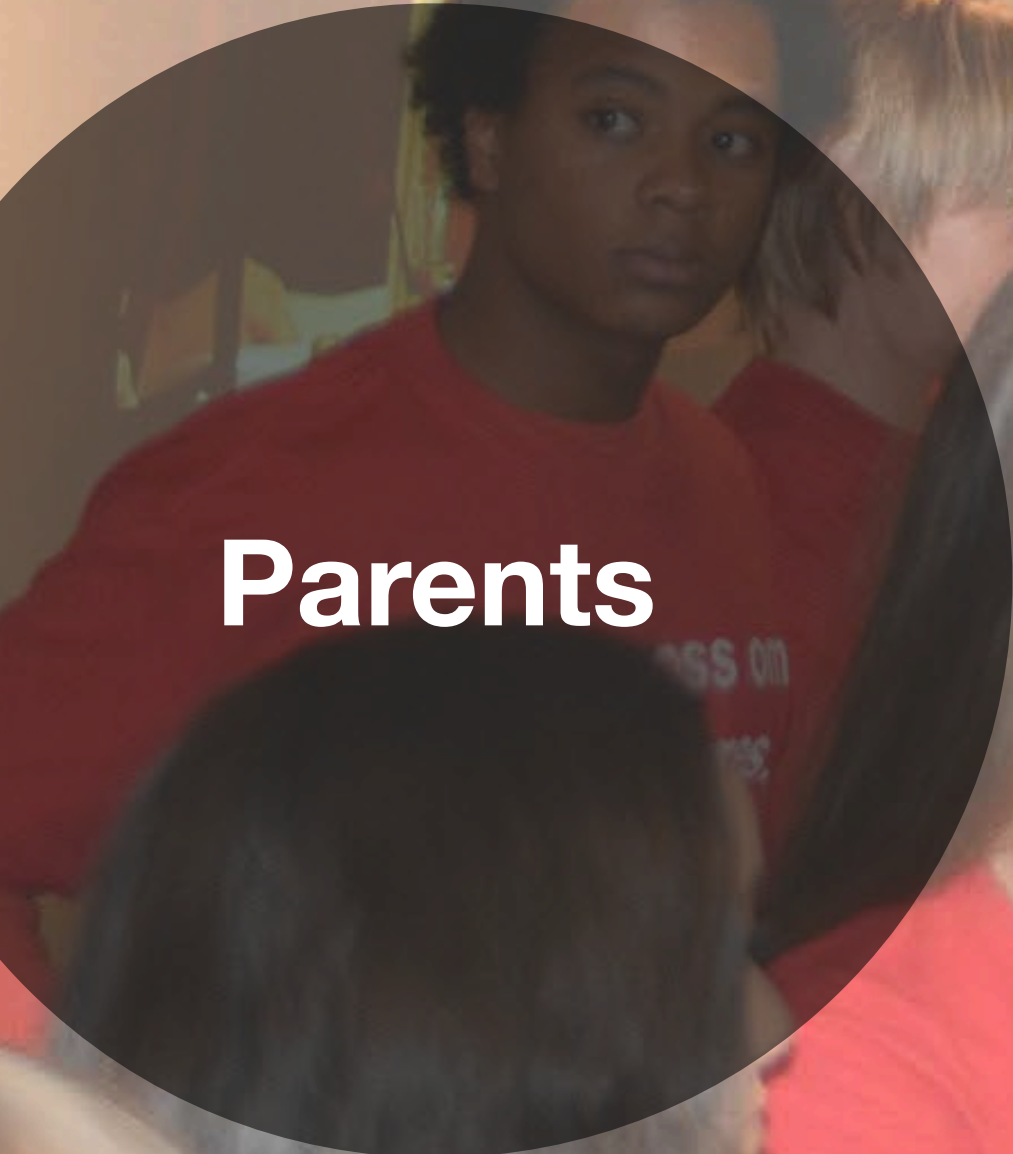


**Retraining  
Teachers**

**Inter-  
disciplinary  
Uses**

**New  
Equipment**

# MARKETING & PROMOTION



Parents



Future Vision



Open Day



Early Promotions

# COSTS

2018-2025

## START-UP COSTS

## Operational Costs

Yearly teachers salary = 540 000

Yearly operational costs per 2017 = 45 mill

Annual costs: (2x420')+(4x840') = 4,2 mill

+ other operational costs = 1,8 mill

**=Yearly increase in operational costs = 6 mill**



A stylized map of Europe with a light blue background and white outlines for landmasses. A red location pin is placed on the western coast of Europe. A semi-transparent blue rectangular box is centered over the map, containing white text. The text reads «PUT RISØR ON THE MAP» in a bold, sans-serif font. The word 'RISØR' has a diagonal slash through the letter 'O'.

«PUT RISØR ON THE MAP»



RISØR  
VGS